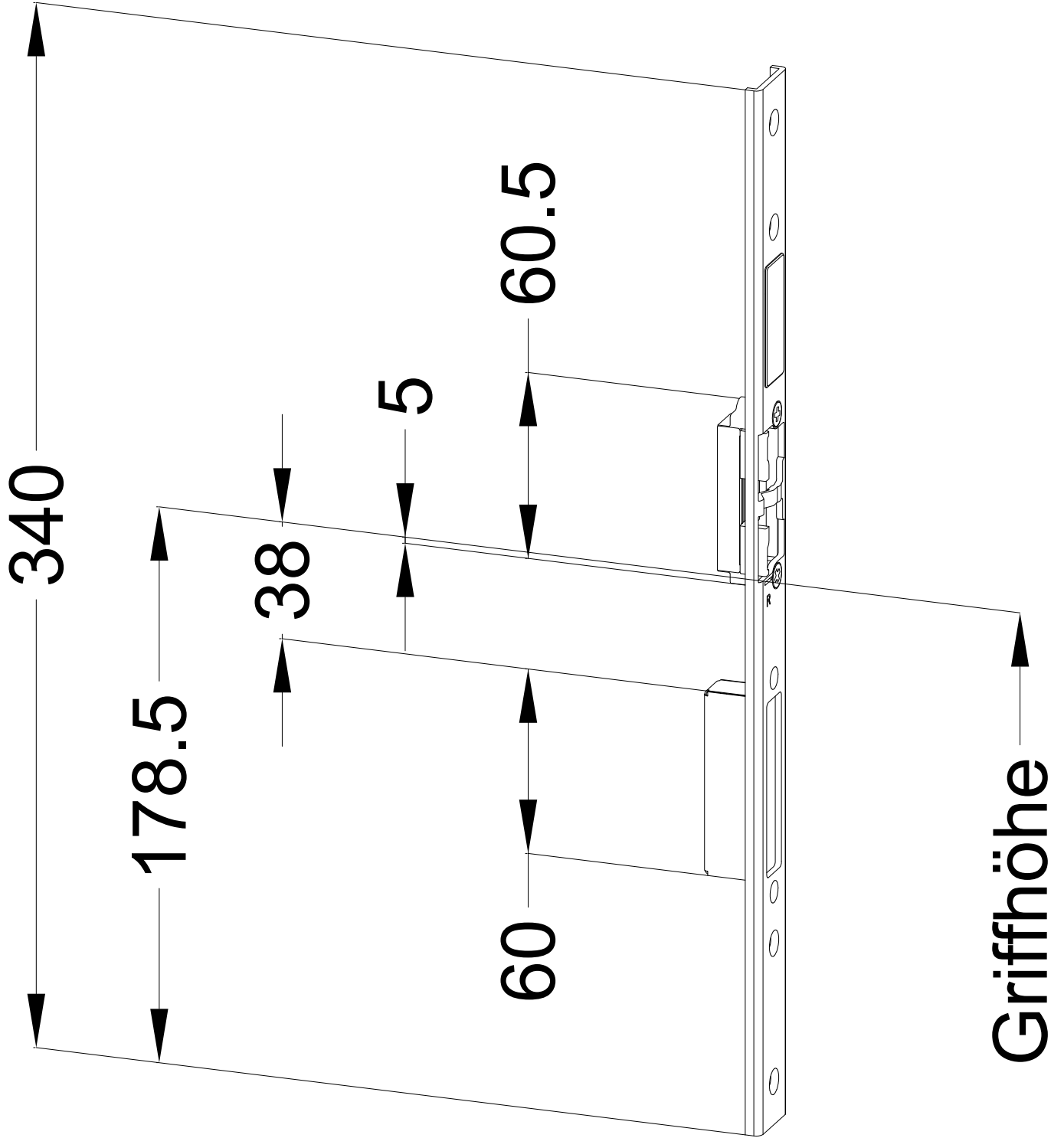


Perspektive
Rahmenteile:

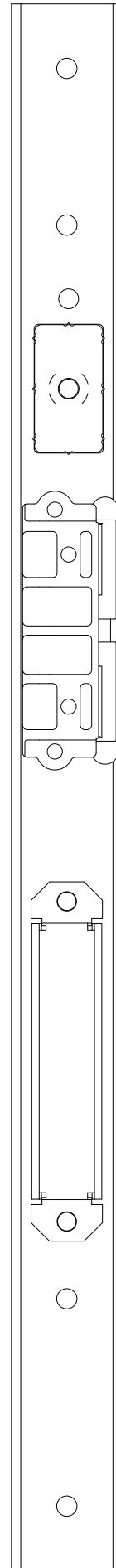
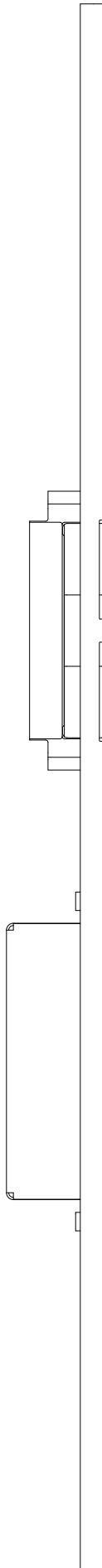
STV-SB FRA U2403 AVU FAB1 SKG RS
DIN LS spiegelbildlich



Ansichten

Rahmenteile:

**STV-SB FRA U2403 AVU FAB1 SKG RS
DIN LS spiegelbildlich**



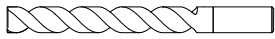
Fräsmaße

Rahmenteile:

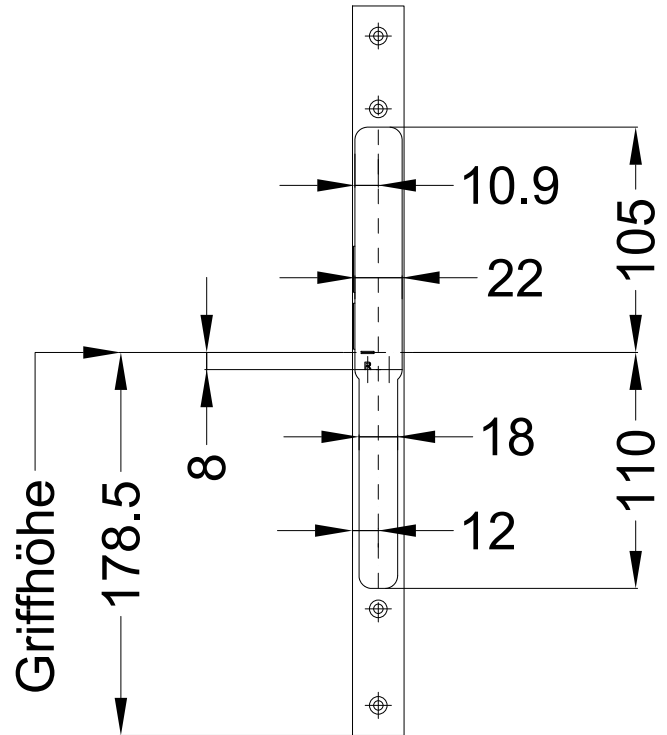
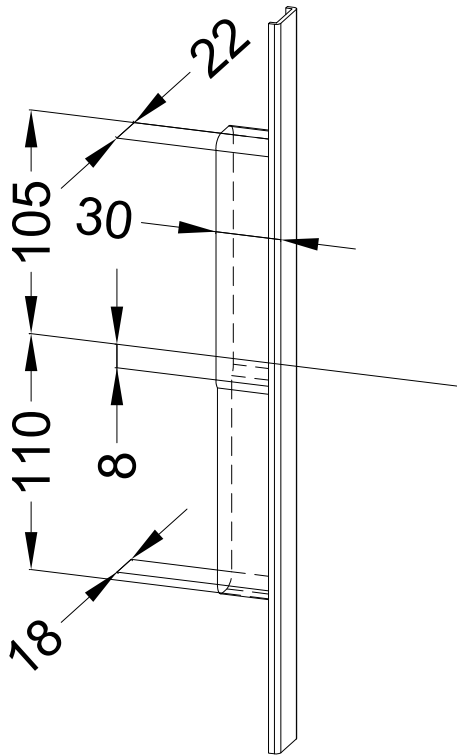
STV-SB FRA U2403 AVU FAB1 SKG RS
DIN LS spiegelbildlich



Empfohlene Fräsung

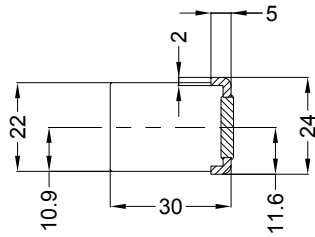
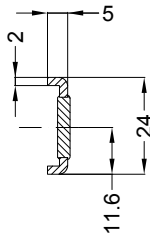


Ø 12

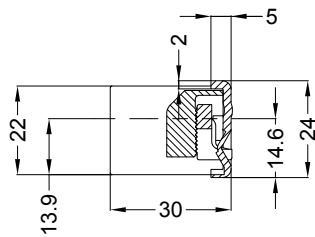
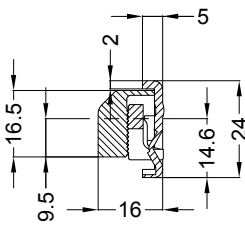


Allgemeine Vermaung

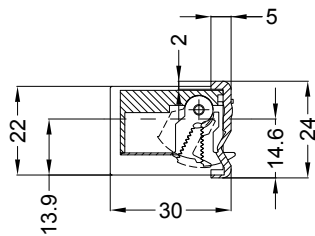
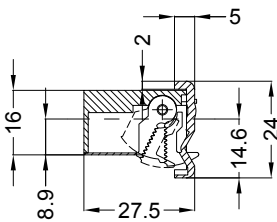
Frsmae



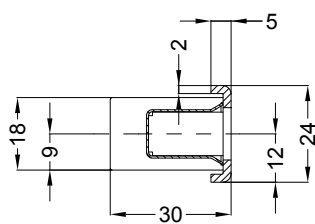
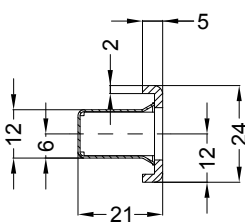
Situation
 Abdeckkappe



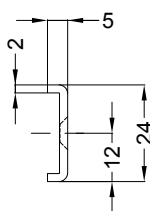
Situation Falle
 mit ESW 9/91,4 FA



Situation
 E-ffner 1 mm abgelassen

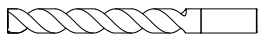


Situation
 Riegel



Lage
 Schlieblech

Empfohlene Fräsung



Ø 12

