

# T-AP179AV4DORKGB1F2060L108P/6592/9M2RSMC 5103637



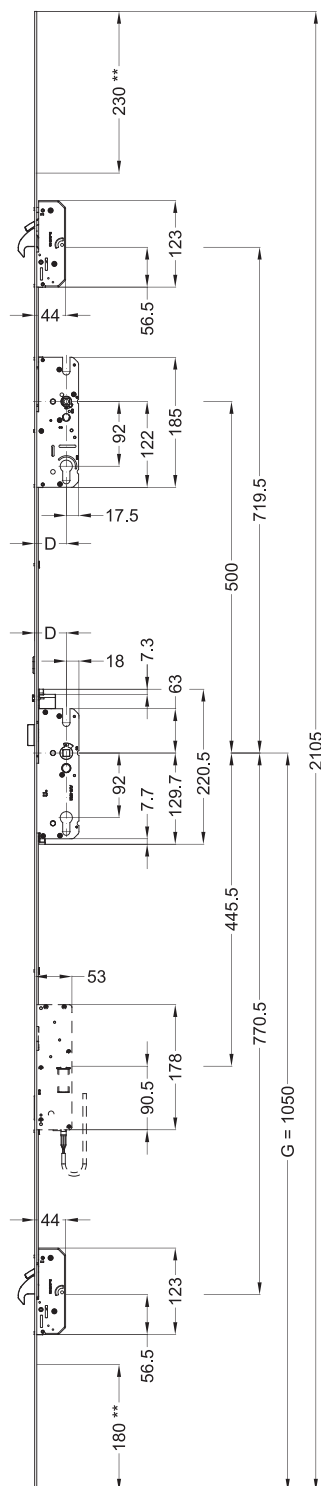
Produktdetails	
Produktbasisklassen ❶	Mehrfachverriegelung ❶
Produkt-Funktionsgruppe	Schloss - mechanisch
Produktgruppe	panicLock
Produkt	panicLock AV4D/Automatik Panik
Produktvariante	panicLock AP EN179 AV4D OR KG

Spezifikation	
Öffnungsmöglichkeit	1-flügelig aktiv
Flügelfalzhöhe	1.875 - 2.230 mm
Griffhöhe	1050 mm
Schlossbetätigung	AV4D OR/Schlüsselbetätigt
Panikfunktion	Umschaltfunktion B
Stulpart	Flachstulp
Stulpbreite	20 mm
Stulpvariante	Variante 60
Stulpende	Eckig
Dornmaß	65 mm
Abstandsmaß	92 mm
Zylindertyp	Profilzylinder (PZ)
Drückernuss	9 mm
Drückernussausführung	Standard Drückernuss
Nebenverriegelungsart	Schwenkriegel AV4D Standard
Anzahl der Nebenverriegelungen	2
DIN Richtung	DIN rechts
Oberfläche	Matt chromatiert MC
Hauptriegel	Ohne Hauptriegel
Fallenausführung	Abgeschrägte Falle 9°
Werkstoff Falle	Zink-Stahl
Türwächterfunktion	Ohne Türwächterfunktion
Zusatzschloss	AP4B - Zusatzschloss
Befestigungsart	Standard Beschlagsschraube

Zertifizierung	
Zertifizierung SKG	SKG **
DIN EN 179:2008-04	37601342AB/D
DIN 18251-3:2002-11	Klasse 4
Ift-Zertifizierung QM 342	Klasse 4
SBD/PAS24	geeignet

T-AP179AV4DORKGB1F2060L108P/6592/9M2RSMC  
5103637

# T-AP179AV4DORKGB1F2060L108P/6592/9M2RSMC 5103637



## Allgemeine Vermaung

D = Dornma

G = Griffhhe

(\*\* = Ablngbereich)

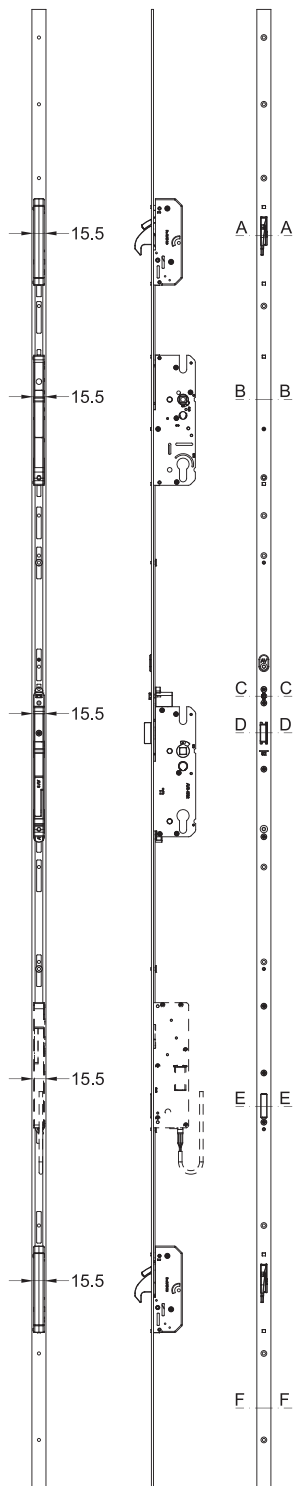
Technical drawing of a door with a width of 1050 mm. The drawing shows the door with various hardware and dimensions. The dimensions are as follows:

- Overall width: 1050 mm
- Distance from left edge to first handle: 2105 mm
- Distance from left edge to second handle: 1015 mm
- Distance from left edge to third handle: 920 mm
- Distance from left edge to fourth handle: 815 mm
- Distance from left edge to fifth handle: 633 mm
- Distance from left edge to sixth handle: 335 mm
- Distance from left edge to seventh handle: 278 mm
- Distance from left edge to eighth handle: 120 mm
- Distance from left edge to ninth handle: 165 mm
- Distance from left edge to tenth handle: 300 mm
- Distance from left edge to eleventh handle: 528 mm
- Distance from left edge to twelfth handle: 675 mm
- Distance from left edge to thirteenth handle: 857 mm
- Distance from left edge to fourteenth handle: 980 mm
- Distance from left edge to fifteenth handle: 1050 mm
- Distance from left edge to sixteenth handle: 165 mm
- Distance from left edge to seventeenth handle: 70 mm
- Distance from left edge to eighteenth handle: 165 mm
- Distance from left edge to nineteenth handle: 300 mm
- Distance from left edge to twentieth handle: 528 mm
- Distance from left edge to twenty-first handle: 675 mm
- Distance from left edge to twenty-second handle: 857 mm
- Distance from left edge to twenty-third handle: 980 mm
- Distance from left edge to twenty-fourth handle: 1050 mm
- Distance from left edge to twenty-fifth handle: 165 mm
- Distance from left edge to twenty-sixth handle: 70 mm
- Distance from left edge to twenty-seventh handle: 165 mm
- Distance from left edge to twenty-eighth handle: 300 mm
- Distance from left edge to twenty-ninth handle: 528 mm
- Distance from left edge to thirtieth handle: 675 mm
- Distance from left edge to thirty-first handle: 857 mm
- Distance from left edge to thirty-second handle: 980 mm
- Distance from left edge to thirty-third handle: 1050 mm
- Distance from left edge to thirty-fourth handle: 165 mm
- Distance from left edge to thirty-fifth handle: 70 mm
- Distance from left edge to thirty-sixth handle: 165 mm
- Distance from left edge to thirty-seventh handle: 300 mm
- Distance from left edge to thirty-eighth handle: 528 mm
- Distance from left edge to thirty-ninth handle: 675 mm
- Distance from left edge to fortieth handle: 857 mm
- Distance from left edge to forty-first handle: 980 mm
- Distance from left edge to forty-second handle: 1050 mm
- Distance from left edge to forty-third handle: 165 mm
- Distance from left edge to forty-fourth handle: 70 mm
- Distance from left edge to forty-fifth handle: 165 mm
- Distance from left edge to forty-sixth handle: 300 mm
- Distance from left edge to forty-seventh handle: 528 mm
- Distance from left edge to forty-eighth handle: 675 mm
- Distance from left edge to forty-ninth handle: 857 mm
- Distance from left edge to fiftieth handle: 980 mm
- Distance from left edge to fifty-first handle: 1050 mm
- Distance from left edge to fifty-second handle: 165 mm
- Distance from left edge to fifty-third handle: 70 mm
- Distance from left edge to fifty-fourth handle: 165 mm
- Distance from left edge to fifty-fifth handle: 300 mm
- Distance from left edge to fifty-sixth handle: 528 mm
- Distance from left edge to fifty-seventh handle: 675 mm
- Distance from left edge to fifty-eighth handle: 857 mm
- Distance from left edge to fifty-ninth handle: 980 mm
- Distance from left edge to sixtieth handle: 1050 mm
- Distance from left edge to sixty-first handle: 165 mm
- Distance from left edge to sixty-second handle: 70 mm
- Distance from left edge to sixty-third handle: 165 mm
- Distance from left edge to sixty-fourth handle: 300 mm
- Distance from left edge to sixty-fifth handle: 528 mm
- Distance from left edge to sixty-sixth handle: 675 mm
- Distance from left edge to sixty-seventh handle: 857 mm
- Distance from left edge to sixty-eighth handle: 980 mm
- Distance from left edge to sixty-ninth handle: 1050 mm
- Distance from left edge to seventieth handle: 165 mm
- Distance from left edge to seventy-first handle: 70 mm
- Distance from left edge to seventy-second handle: 165 mm
- Distance from left edge to seventy-third handle: 300 mm
- Distance from left edge to seventy-fourth handle: 528 mm
- Distance from left edge to seventy-fifth handle: 675 mm
- Distance from left edge to seventy-sixth handle: 857 mm
- Distance from left edge to seventy-seventh handle: 980 mm
- Distance from left edge to seventy-eighth handle: 1050 mm
- Distance from left edge to seventy-ninth handle: 165 mm
- Distance from left edge to eightieth handle: 70 mm
- Distance from left edge to eighty-first handle: 165 mm
- Distance from left edge to eighty-second handle: 300 mm
- Distance from left edge to eighty-third handle: 528 mm
- Distance from left edge to eighty-fourth handle: 675 mm
- Distance from left edge to eighty-fifth handle: 857 mm
- Distance from left edge to eighty-sixth handle: 980 mm
- Distance from left edge to eighty-seventh handle: 1050 mm
- Distance from left edge to eighty-eighth handle: 165 mm
- Distance from left edge to eighty-ninth handle: 70 mm
- Distance from left edge to ninetyth handle: 165 mm
- Distance from left edge to ninety-first handle: 300 mm
- Distance from left edge to ninety-second handle: 528 mm
- Distance from left edge to ninety-third handle: 675 mm
- Distance from left edge to ninety-fourth handle: 857 mm
- Distance from left edge to ninety-fifth handle: 980 mm
- Distance from left edge to ninety-sixth handle: 1050 mm
- Distance from left edge to ninety-seventh handle: 165 mm
- Distance from left edge to ninety-eighth handle: 70 mm
- Distance from left edge to ninety-ninth handle: 165 mm
- Distance from left edge to one hundredth handle: 300 mm
- Distance from left edge to one hundred and first handle: 528 mm
- Distance from left edge to one hundred and second handle: 675 mm
- Distance from left edge to one hundred and third handle: 857 mm
- Distance from left edge to one hundred and fourth handle: 980 mm
- Distance from left edge to one hundred and fifth handle: 1050 mm
- Distance from left edge to one hundred and sixth handle: 165 mm
- Distance from left edge to one hundred and seventh handle: 70 mm
- Distance from left edge to one hundred and eighth handle: 165 mm
- Distance from left edge to one hundred and ninth handle: 300 mm
- Distance from left edge to one hundred and tenth handle: 528 mm
- Distance from left edge to one hundred and eleventh handle: 675 mm
- Distance from left edge to one hundred and twelfth handle: 857 mm
- Distance from left edge to one hundred and thirteenth handle: 980 mm
- Distance from left edge to one hundred and fourteenth handle: 1050 mm
- Distance from left edge to one hundred and fifteenth handle: 165 mm
- Distance from left edge to one hundred and sixteenth handle: 70 mm
- Distance from left edge to one hundred and seventeenth handle: 165 mm
- Distance from left edge to one hundred and eighteenth handle: 300 mm
- Distance from left edge to one hundred and nineteenth handle: 528 mm
- Distance from left edge to one hundred and twentieth handle: 675 mm
- Distance from left edge to one hundred and twenty-first handle: 857 mm
- Distance from left edge to one hundred and twenty-second handle: 980 mm
- Distance from left edge to one hundred and twenty-third handle: 1050 mm
- Distance from left edge to one hundred and twenty-fourth handle: 165 mm
- Distance from left edge to one hundred and twenty-fifth handle: 70 mm
- Distance from left edge to one hundred and twenty-sixth handle: 165 mm
- Distance from left edge to one hundred and twenty-seventh handle: 300 mm
- Distance from left edge to one hundred and twenty-eighth handle: 528 mm
- Distance from left edge to one hundred and twenty-ninth handle: 675 mm
- Distance from left edge to one hundred and thirtieth handle: 857 mm
- Distance from left edge to one hundred and thirty-first handle: 980 mm
- Distance from left edge to one hundred and thirty-second handle: 1050 mm
- Distance from left edge to one hundred and thirty-third handle: 165 mm
- Distance from left edge to one hundred and thirty-fourth handle: 70 mm
- Distance from left edge to one hundred and thirty-fifth handle: 165 mm
- Distance from left edge to one hundred and thirty-sixth handle: 300 mm
- Distance from left edge to one hundred and thirty-seventh handle: 528 mm
- Distance from left edge to one hundred and thirty-eighth handle: 675 mm
- Distance from left edge to one hundred and thirty-ninth handle: 857 mm
- Distance from left edge to one hundred and fortieth handle: 980 mm
- Distance from left edge to one hundred and forty-first handle: 1050 mm
- Distance from left edge to one hundred and forty-second handle: 165 mm
- Distance from left edge to one hundred and forty-third handle: 70 mm
- Distance from left edge to one hundred and forty-fourth handle: 165 mm
- Distance from left edge to one hundred and forty-fifth handle: 300 mm
- Distance from left edge to one hundred and forty-sixth handle: 528 mm
- Distance from left edge to one hundred and forty-seventh handle: 675 mm
- Distance from left edge to one hundred and forty-eighth handle: 857 mm
- Distance from left edge to one hundred and forty-ninth handle: 980 mm
- Distance from left edge to one hundred and fiftieth handle: 1050 mm
- Distance from left edge to one hundred and fifty-first handle: 165 mm
- Distance from left edge to one hundred and fifty-second handle: 70 mm
- Distance from left edge to one hundred and fifty-third handle: 165 mm
- Distance from left edge to one hundred and fifty-fourth handle: 300 mm
- Distance from left edge to one hundred and fifty-fifth handle: 528 mm
- Distance from left edge to one hundred and fifty-sixth handle: 675 mm
- Distance from left edge to one hundred and fifty-seventh handle: 857 mm
- Distance from left edge to one hundred and fifty-eighth handle: 980 mm
- Distance from left edge to one hundred and fifty-ninth handle: 1050 mm
- Distance from left edge to one hundred and sixtieth handle: 165 mm
- Distance from left edge to one hundred and sixty-first handle: 70 mm
- Distance from left edge to one hundred and sixty-second handle: 165 mm
- Distance from left edge to one hundred and sixty-third handle: 300 mm
- Distance from left edge to one hundred and sixty-fourth handle: 528 mm
- Distance from left edge to one hundred and sixty-fifth handle: 675 mm
- Distance from left edge to one hundred and sixty-sixth handle: 857 mm
- Distance from left edge to one hundred and sixty-seventh handle: 980 mm
- Distance from left edge to one hundred and sixty-eighth handle: 1050 mm
- Distance from left edge to one hundred and sixty-ninth handle: 165 mm
- Distance from left edge to one hundred and seventieth handle: 70 mm
- Distance from left edge to one hundred and seventy-first handle: 165 mm
- Distance from left edge to one hundred and seventy-second handle: 300 mm
- Distance from left edge to one hundred and seventy-third handle: 528 mm
- Distance from left edge to one hundred and seventy-fourth handle: 675 mm
- Distance from left edge to one hundred and seventy-fifth handle: 857 mm
- Distance from left edge to one hundred and seventy-sixth handle: 980 mm
- Distance from left edge to one hundred and seventy-seventh handle: 1050 mm
- Distance from left edge to one hundred and seventy-eighth handle: 165 mm
- Distance from left edge to one hundred and seventy-ninth handle: 70 mm
- Distance from left edge to one hundred and eightieth handle: 165 mm
- Distance from left edge to one hundred and eighty-first handle: 300 mm
- Distance from left edge to one hundred and eighty-second handle: 528 mm
- Distance from left edge to one hundred and eighty-third handle: 675 mm
- Distance from left edge to one hundred and eighty-fourth handle: 857 mm
- Distance from left edge to

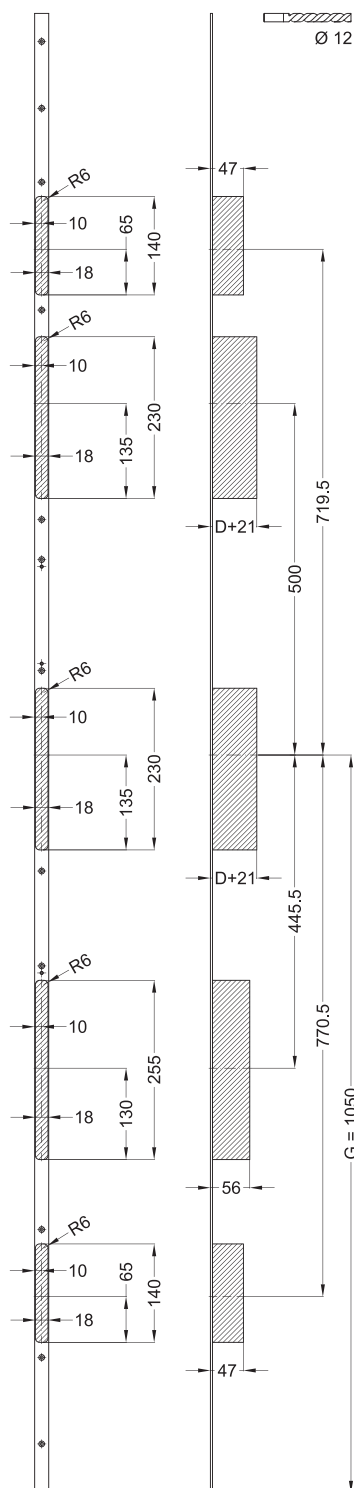
G = Griffhöhe

# T-AP179AV4DORKGB1F2060L108P/6592/9M2RSMC 5103637

## Ansichten



# T-AP179AV4DORKGB1F2060L108P/6592/9M2RSMC 5103637

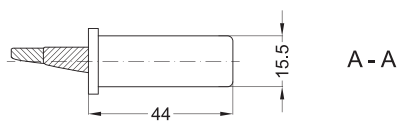


## Fräsmasse

D = Dornmaß

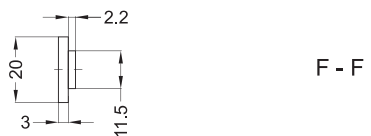
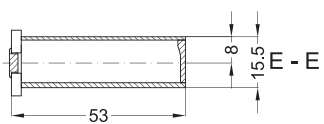
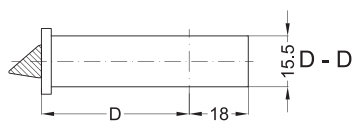
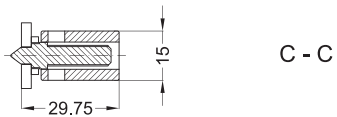
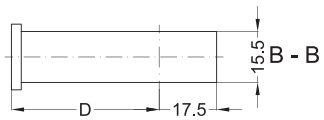
G = Griffhöhe

# T-AP179AV4DORKGB1F2060L108P/6592/9M2RSMC 5103637



## Einbaulage

D = Dornmaß



# T-AP179AV4DORKGB1F2060L108P/6592/9M2RSMC 5103637

## Legende

### Das Winkhaus Portal

Mit einem einfachen Klick auf die Artikelnummer gelangen Sie direkt zum Artikel im Winkhaus Portal. Im Winkhaus Portal sind weitere Informationen wie z.B. eine Produktbeschreibung oder auch Erklärungen der einzelnen Spezifikationen verfügbar. Des Weiteren sind für die verschiedenen Profilsysteme weiterführende Informationen wie z.B. die Flügel- und Blendrahmennummern gegeben. Im Downloadbereich stehen zusätzlich weitere Dokumente und Bilder für das ausgewählte Produkt zur Verfügung.



Das Winkhaus Portal

Benutzername / E-Mail

Passwort

[Passwort vergessen?](#)

[Jetzt Zugang beantragen](#) | [Jetzt Zugang zu den Winkhaus Locking Services \(WLS\) beantragen](#) - Zutrittsorganisation

LOGIN

### Produktbasisklassen

#### Erklärung von Abkürzungen

Angaben, die in Klammern gesetzt sind, werden nur bei einzelnen Mehrfachverriegelungen verwendet.