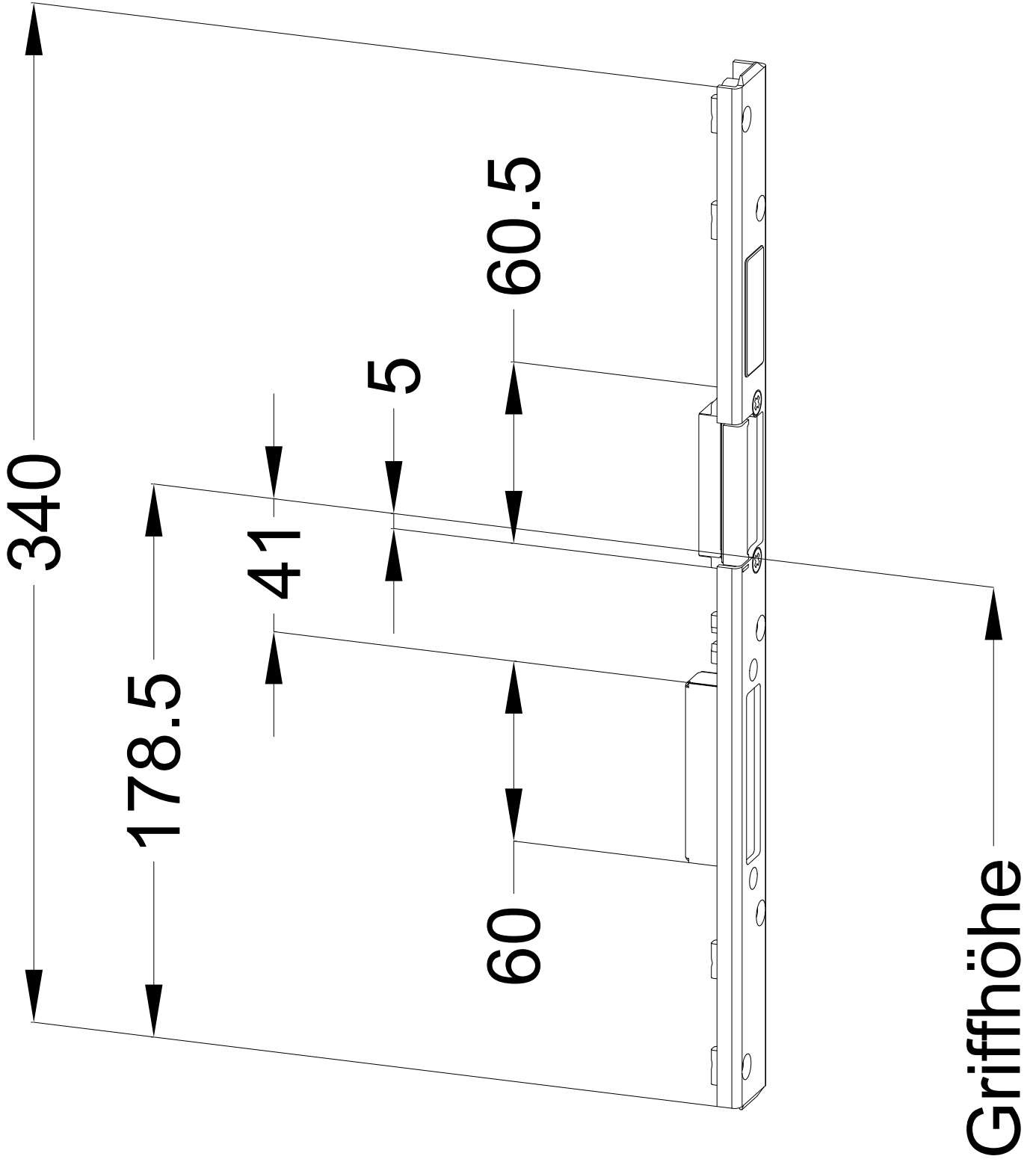
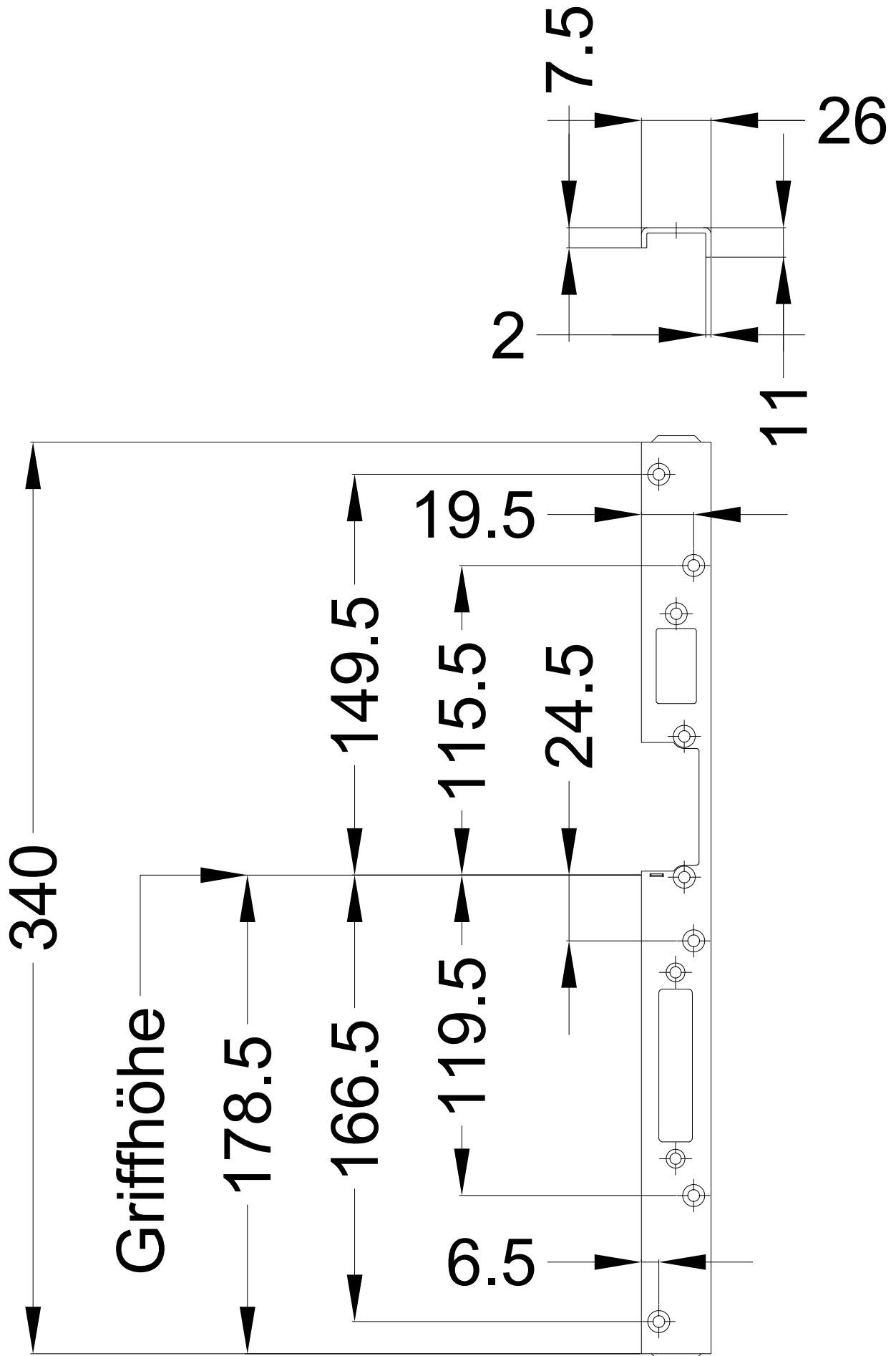


Perspektive  
Rahmenteile:

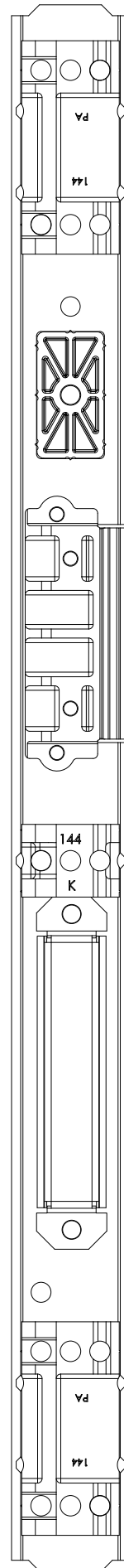
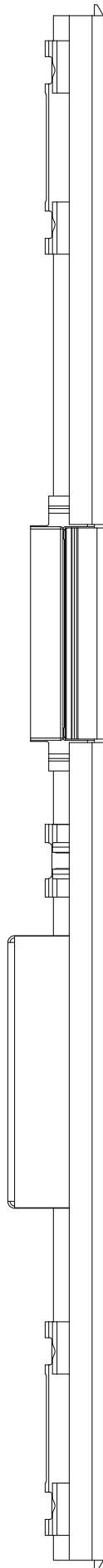
T-SB FRA U26-311 AVU SKG RS  
DIN LS spiegelbildlich





**Ansichten**  
**Rahmenteile:**

**T-SB FRA U26-311 AVU SKG RS**  
**DIN LS spiegelbildlich**



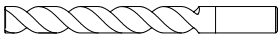
Fräsmaße

Rahmenteile:

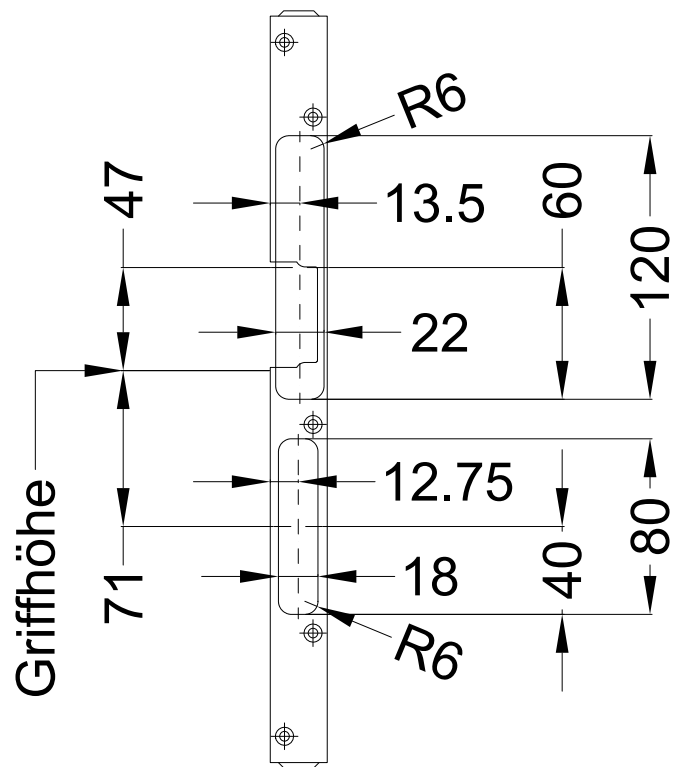
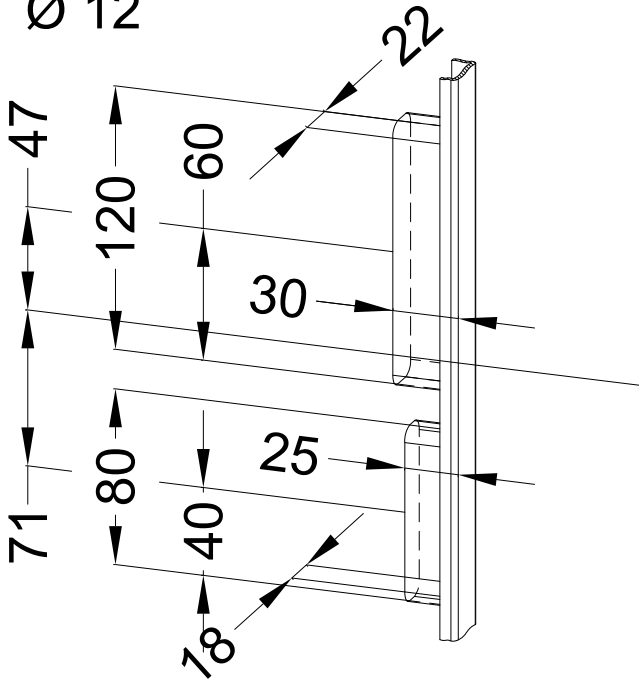
T-SB FRA U26-311 AVU SKG RS  
DIN LS spiegelbildlich



### Empfohlene Fräsung



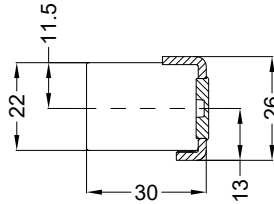
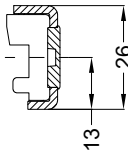
Ø 12



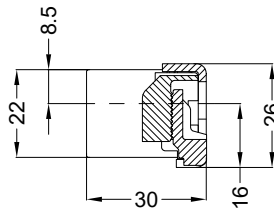
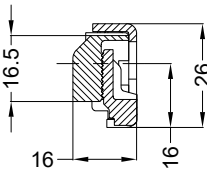
Griffhöhe

Allgemeine Vermaßung

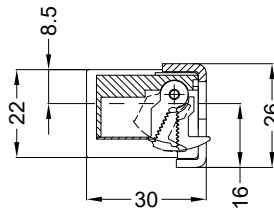
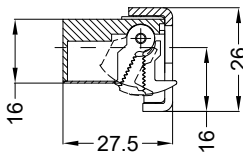
Fräsmaße



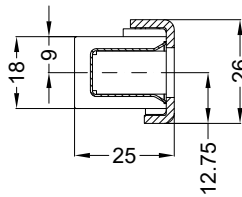
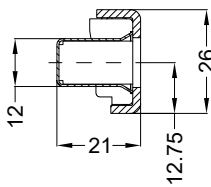
Situation  
 Abdeckkappe  
 MAS KS



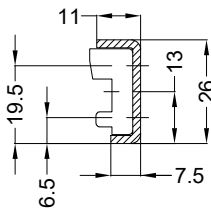
Situation  
 Falle  
 A-9/13/9U AV3



Situation  
 E-Öffner  
 118E A71

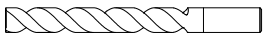


Situation  
 Riegel  
 Tasche R 12-19 SKG



Lage  
 Schließblech

### Empfohlene Fräsung



Ø 12

