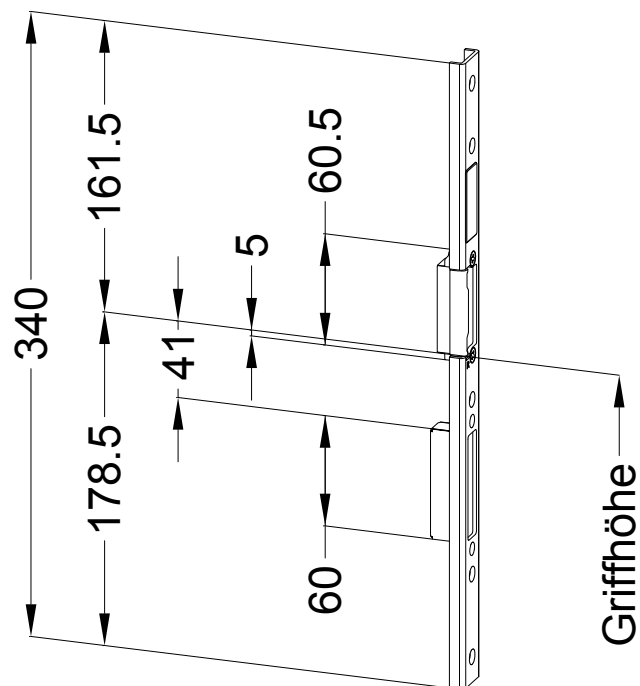
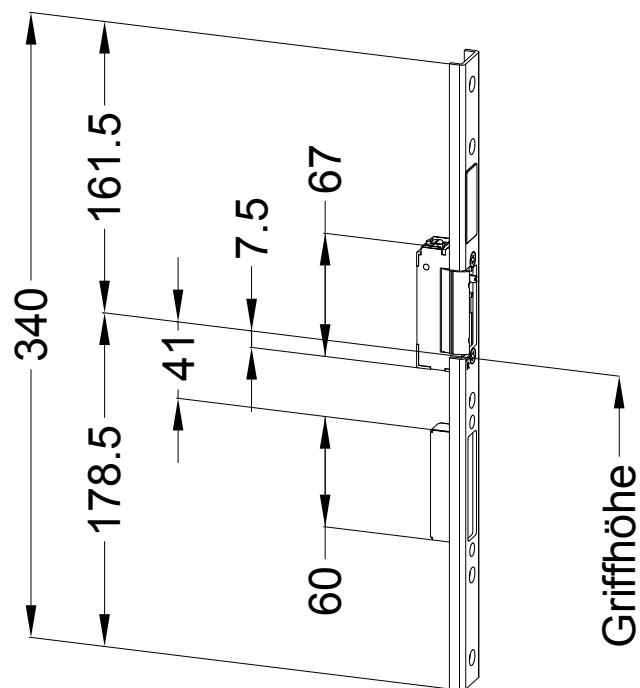


mit Ausgleichsstück A12/7



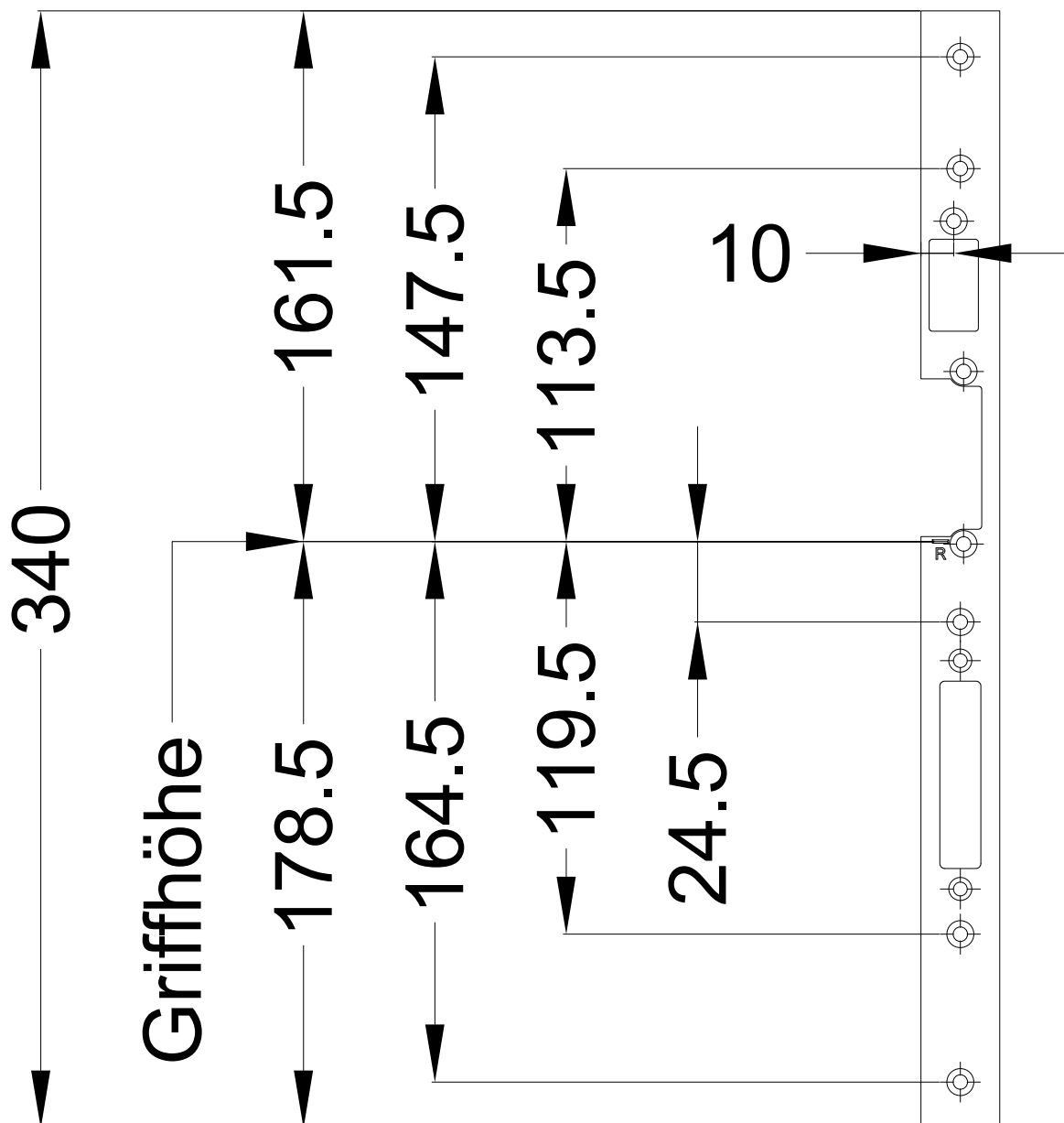
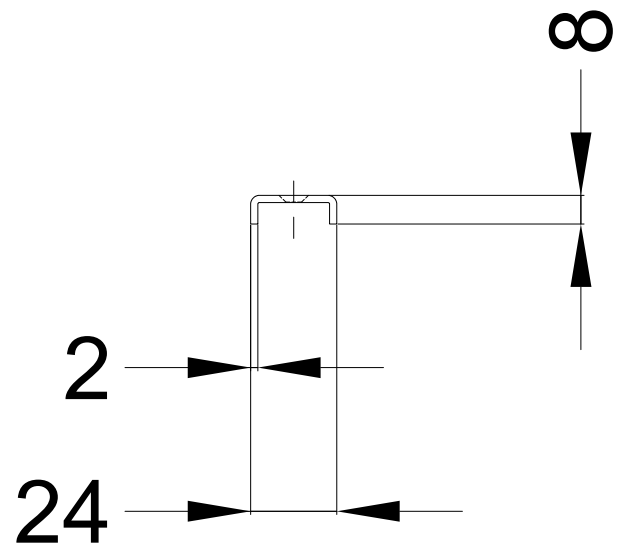
mit Einsatz A9/92



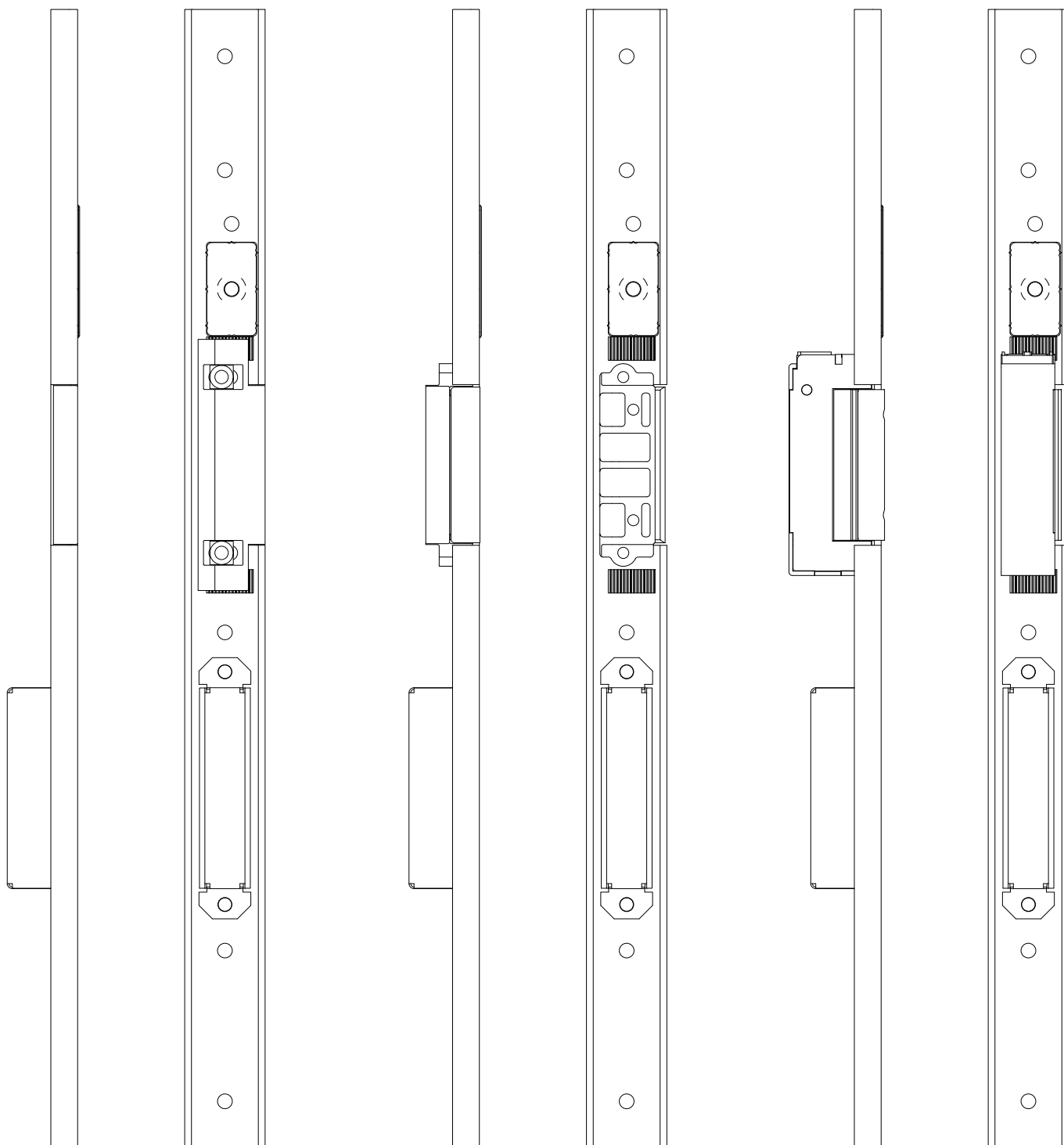
mit E-Öffner 118 E

## Schraubfrage

**STV-SB FRA U2402 AVU SKG RS**  
**DIN LS spiegelbildlich**



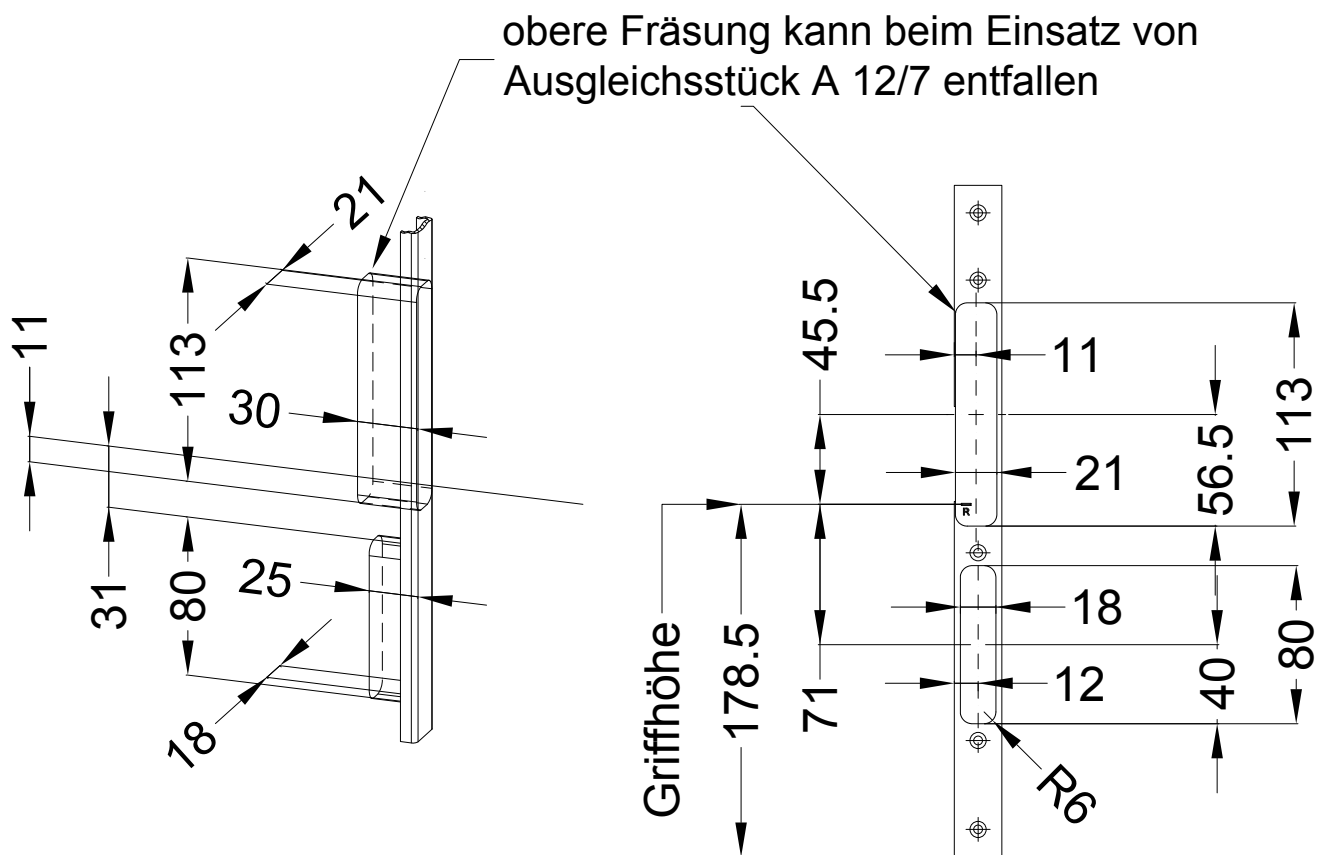
Technische Änderungen vorbehalten!



STV-SB FRA U2402 AVU  
mit Ausgleichsstück A12/7

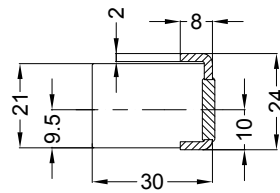
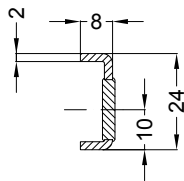
STV-SB FRA U2402 AVU  
mit Einsatz A9/92

STV-SB FRA U2402 AVU  
mit E-Öffner 118 E

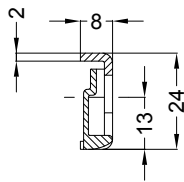


## Allgemeine Vermaung

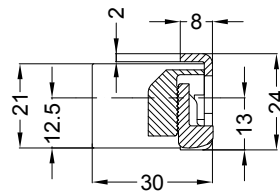
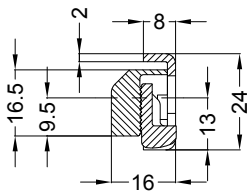
## Frsmae



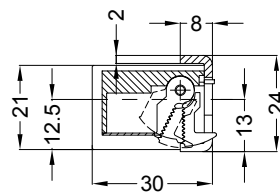
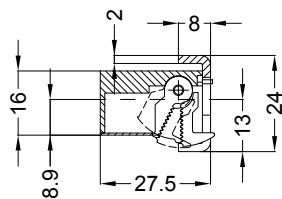
Situation  
Abdeckkappe



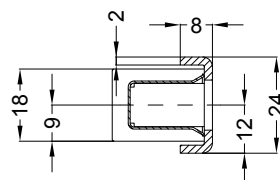
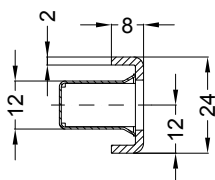
Situation Falle  
mit Einsatzwinkel  
A 12/7



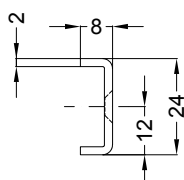
Situation Falle  
mit Einsatz  
A 9/92 AV3 BL



Situation Falle  
mit E-ffner  
1 mm abgelassen



Situation  
Riegel



Lage  
Schlieblech

