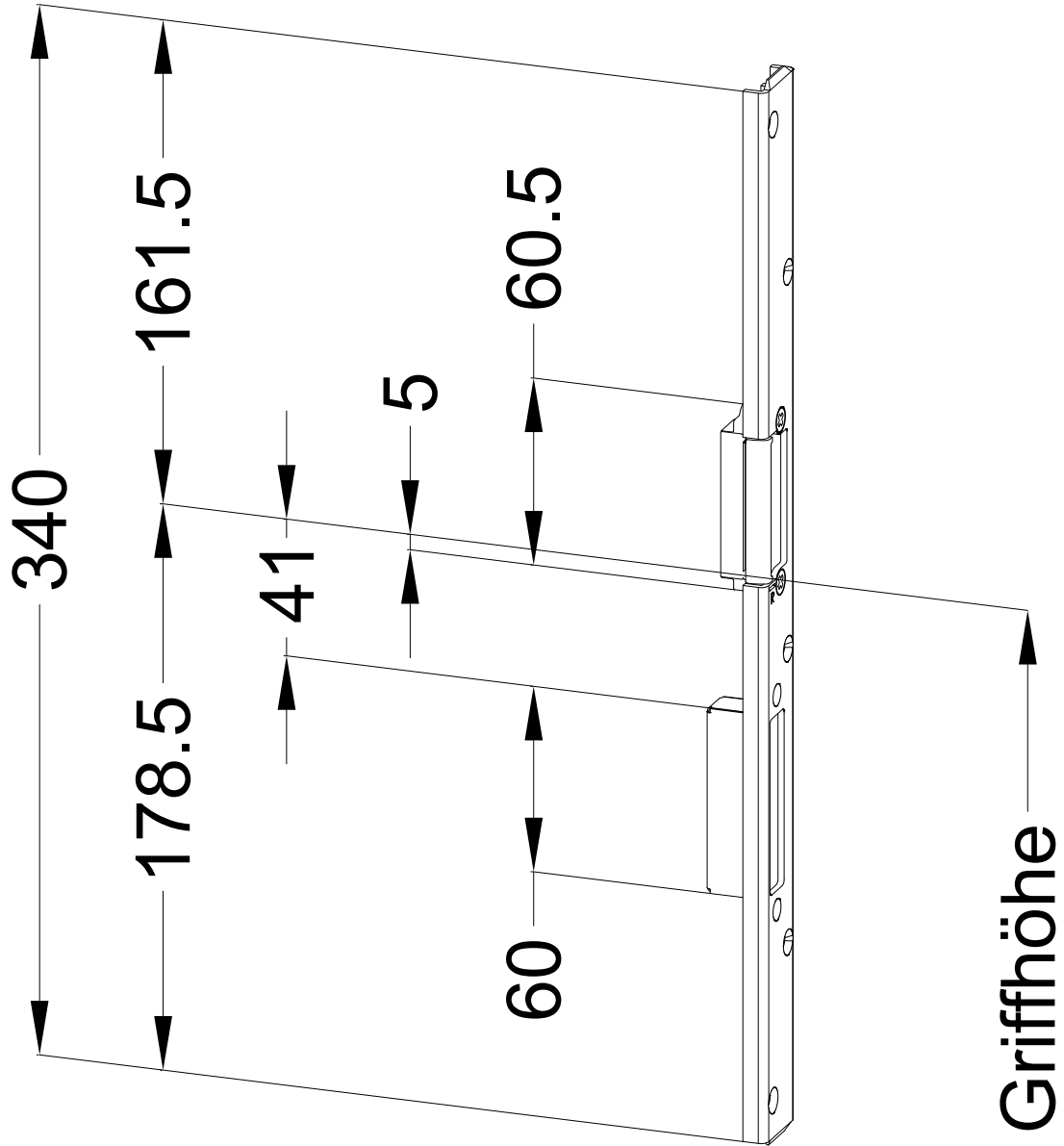
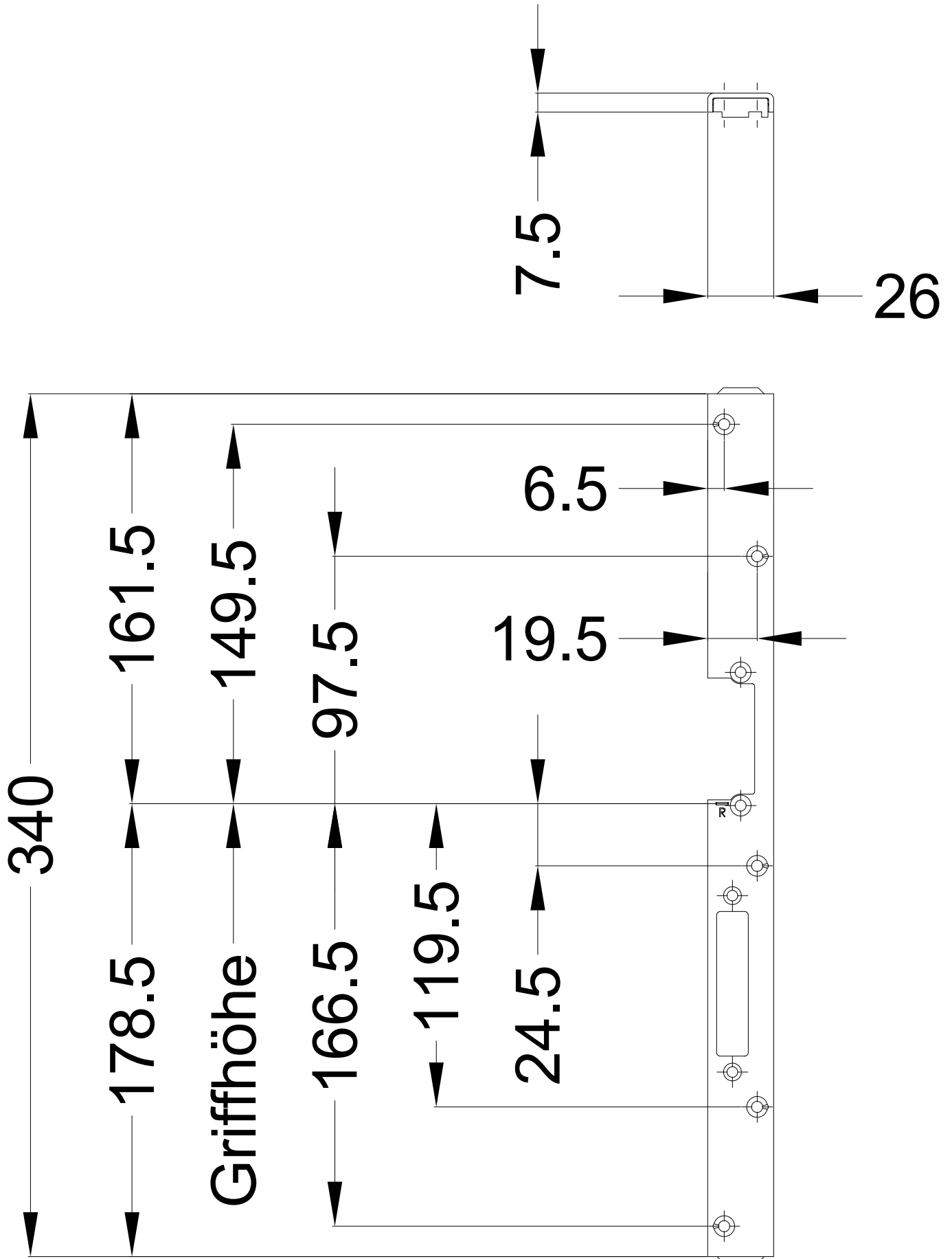


Perspektive  
Rahmenteile:

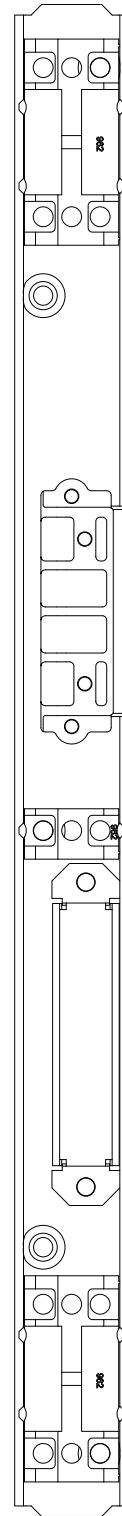
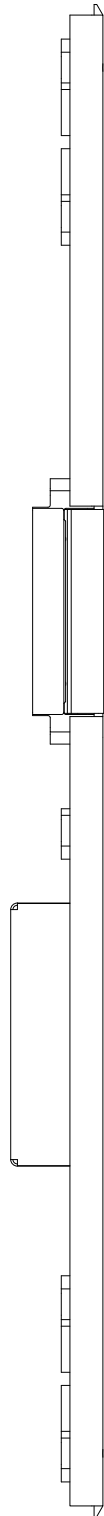
T-SB FRA U26-945 SKG RS  
DIN LS spiegelbildlich





**Ansichten**  
**Rahmenteile:**

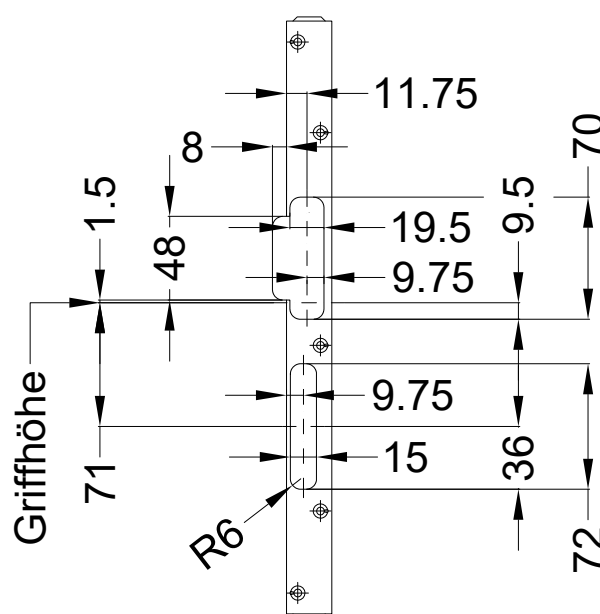
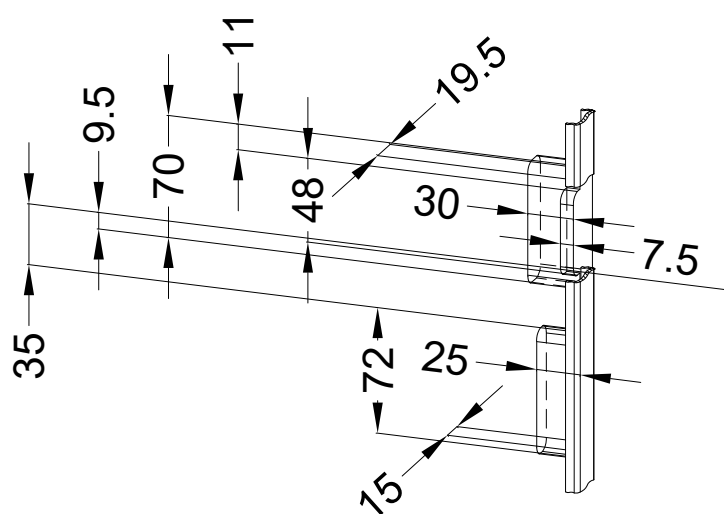
**T-SB FRA U26-945 SKG RS**  
**DIN LS spiegelbildlich**



## Empfohlene Fräsung

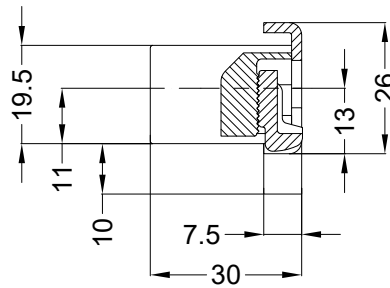
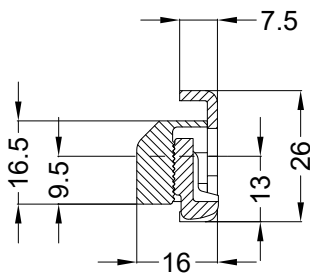


Ø 12

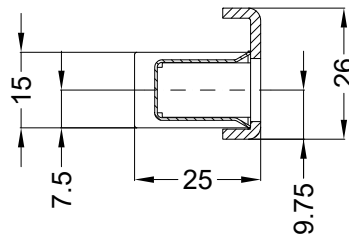
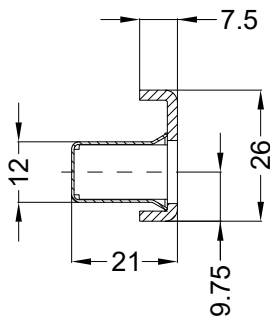


## Allgemeine Vermaung

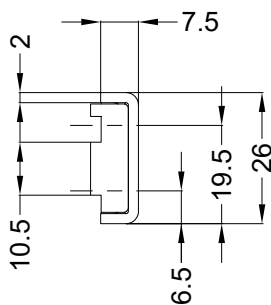
## Frsmae



Situation  
Falle

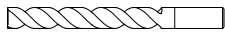


Situation  
Riegel



Lage  
Schlieblech

Empfohlene Fräsung



Ø 12

